

# PAJOT THREADER

LEDUC SYSTEM - Patented

The PAJOT threader is a device used to engage sheet piles one after the other.

Designed and developed by piling specialists, it has many advantages

## SAFETY

The PAJOT threader replaces "the performer on the flying trapeze" one can sometimes find at the very top of the piles, several meters high. The handling of the threader at ground level entails no risk.

## TIME SAVING

The search of piling locks coincidence, the classic way, is long and tedious, all the more when the pile height is important.

The PAJOT threader reduces these operations to a simple pull on a rope end.

## SIMPLICITY

The PAJOT threader is of a very simple design and is adaptable to any work site. One wrench size permits all maintenance and adjusting operations.

## ALL WEATHER OPERATION

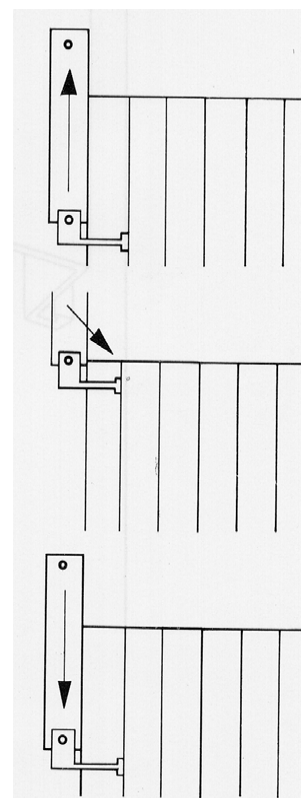
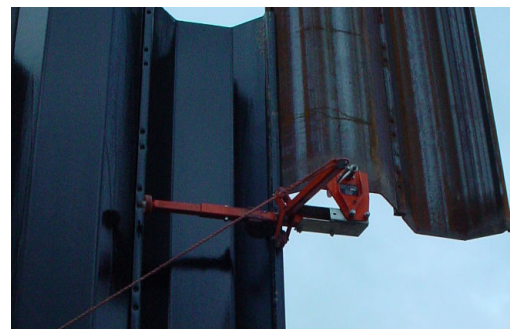
Device simplicity and pile preparation permit to insure engaging under any weather conditions.

## ADAPTATION TO ALL PILES

Only one adaptor piece needs be changed depending on the piles used. Carriage and clamping vice are the same in all cases.

## SAFE HANDLING

The PAJOT threader is used in all positions with respect to sheet. It can be put apart with a simple pivoting of the clamping vice the clamping threader at the bottom of the pile is associated with a pilot which insures a safe fastening.



## DIRECTIONS FOR USE

### 1. PREPARATION OF THREADER

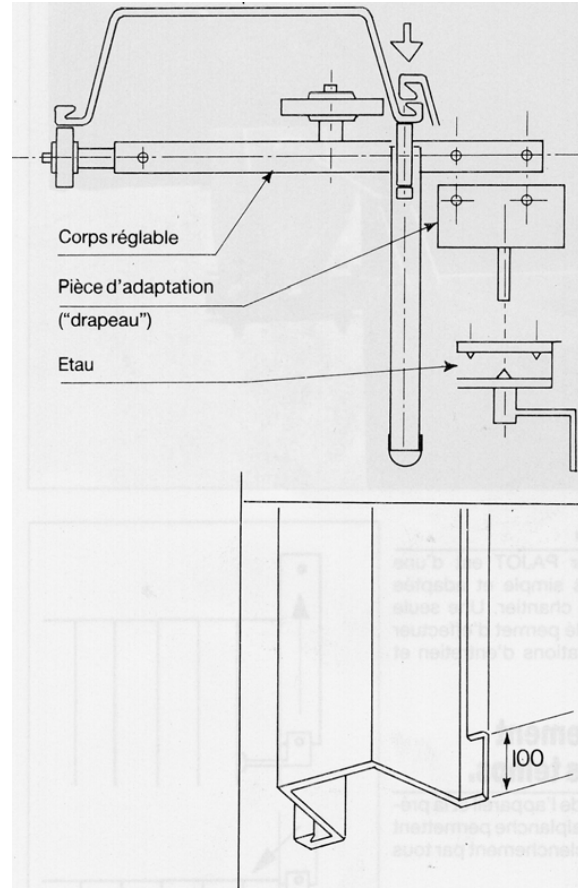
- a/ Adjust rollers gap depending on pile width (wrench 19).
- b/ Mount flag adapted to pile and insert it between carriage and clamping vice (wrench 19, each flag is marked).

### 2. PREPARATION OF PILE

With cutting torch, make a notch in the low part of the pile and on the lock which must engage (see diagram).

### 3. MODE OF OPERATION

- a/ Place pile to be engaged near the pile already rammed, its low part being about one meter above ground or guide.
- b/ Place both piles in contact with locks not engaged placed side by side.
- c/ The threader can operate on either side of the pile already rammed, direct pivoting vice using indexing finger.
- d/ Place carriage in contact with the pile already rammed and lift it until the engaging vice in the pile to be engaged, the insuring contact of side stop.
- e/ Tighten vice with the crank until the crank screw nut is lifted 3 to 5 mm. In these conditions, diamond points effort is insured
- f/ Mount the pile to be engaged by letting it slide along the previous pile to about 5 cm of the top edge. At this level, the notch made in the pile enables the side movement of the lock, which is then placed vertically to the previous lock. The pulling on the rope end of the engaging crossbar may be necessary to facilitate side movement.
- g/ Let the engaged pile go down to man's height and dismantle the threader for the next sheet pile.
- h/ For the following pile, the position of which is alternated, only one has to turn the vice with retractable finger.



**N.B.** – Flags are provided according to sheet pile profiles. For the 'Z' sheet piles and for the engagement in pairs, please contact us.